

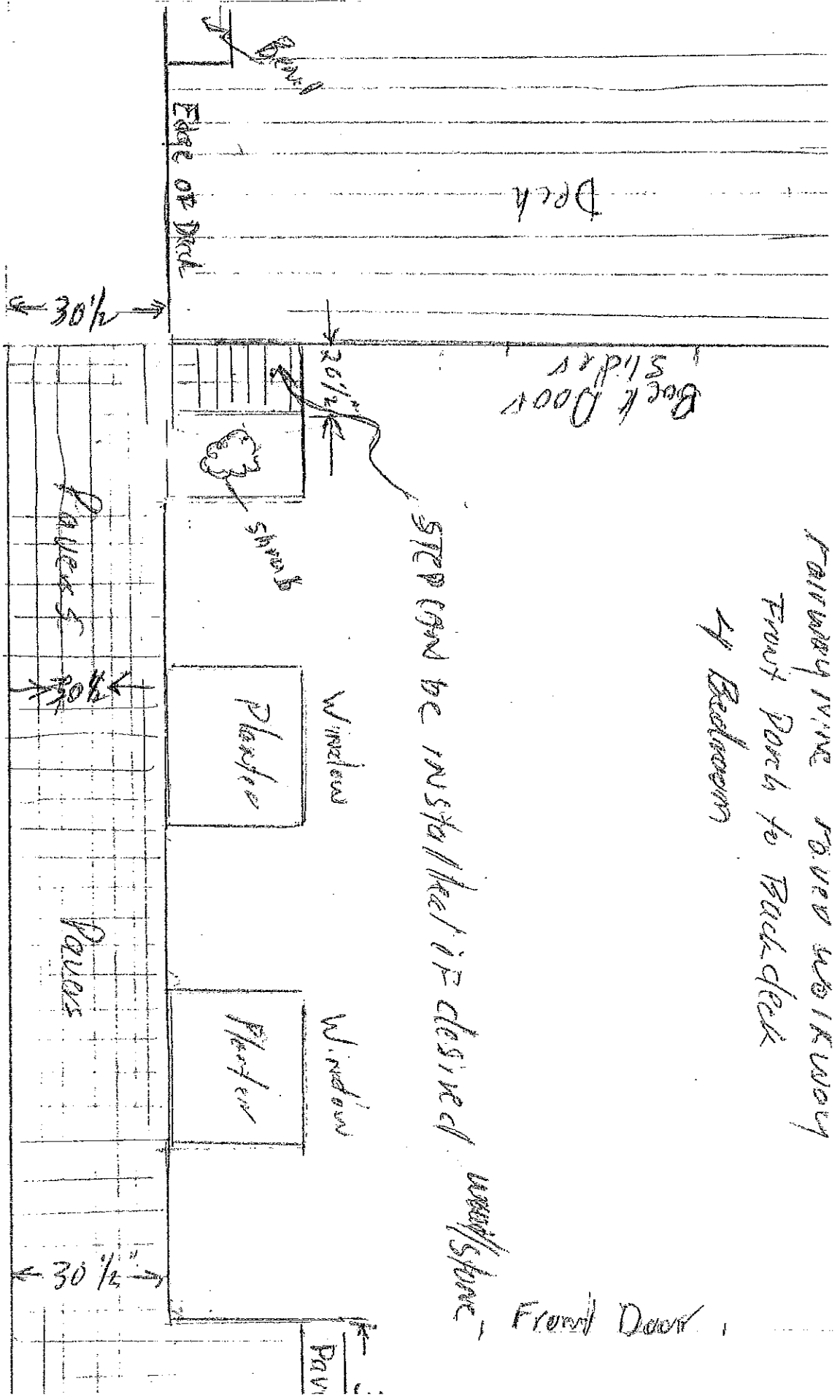
## FAIRWAY NINE II PAVER WALKWAY SPECIFICATIONS

1. All paver are to match driveway pavers in size and dimension.
2. Width of the walkway to be 30.5" inches.
3. The outer edge of the walkway is to be flush with the grass. See drawing A for hillside walkway, or drawing B for walkway on flat ground.
4. Walkway is to be sloped away from the foundation by 1/2" within the 30" width of walkway.
5. The walkway is to have a thin vertical paver next to the concrete foundation. This will compensate for leveling the area for the paver installation.
6. Walkway is to connect from the back deck to the front porch. See drawing C.
7. Another option is to have the walkway terminate at the front door wall.
8. Walkway construction plans and drawings are to be submitted to the ADC Committee<sup>2</sup> on the ADC form to determine that they are in compliance with the specifications.
9. After review by the ADC Committee, the form is to be submitted to the BOD for approval.
10. All construction, landscape, sprinkler and maintenance costs incurred due to walkway installation will be the responsibility of the homeowner.

Fairway Nine II Board of Directors Approval

September 23, 2009

Rainway w/ine covered walkway  
 Front Porch to Back deck  
 4 Bedrooms



STEP can be installed if desired  
 wood/spare

NOT TO SCALE

Fairway Nite over Utilities  
From Front Deck to Back Deck  
3 Bedroom

Living Room

Front Door

Front Door

Front Deck

Back Door

Plants

11'4"

8'4"

11'4"

26'

30 1/2'

11'8"

6'8"

3'4"

Plants

30 1/2'

PAVERS

(20' x 11')

